

CONCRETE FOUNDATION DETAILS

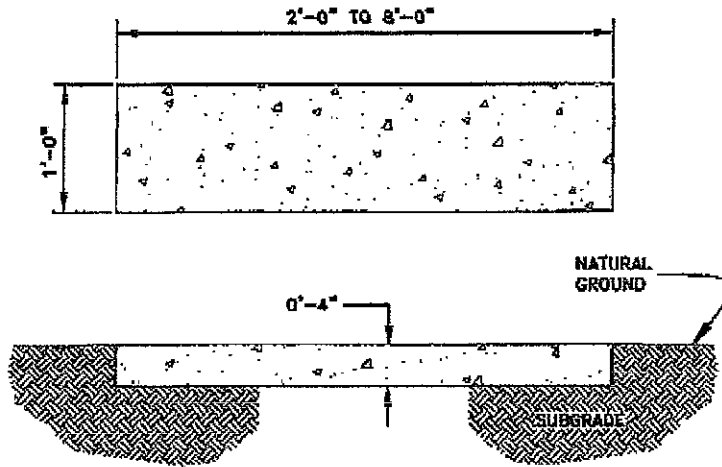


Figure 1. - Typical section for Concrete Foundation.

MINIMUM 3,000 PSI CONCRETE.
COMPACT SUBGRADE PRIOR TO CONCRETE POUR.

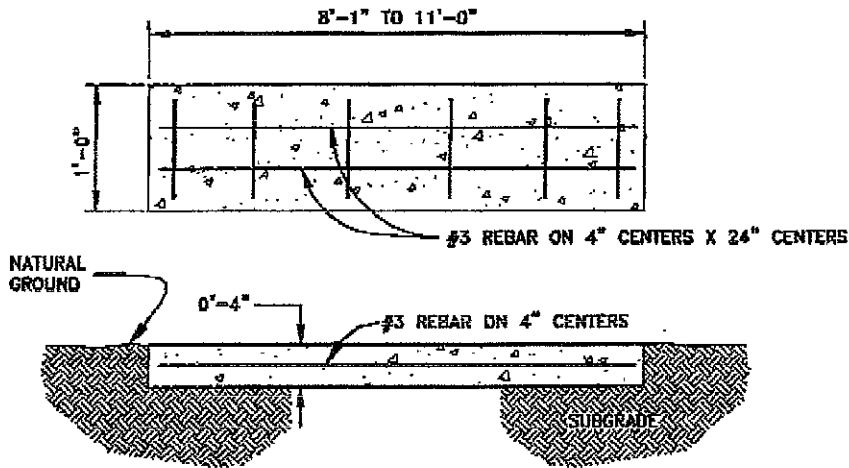
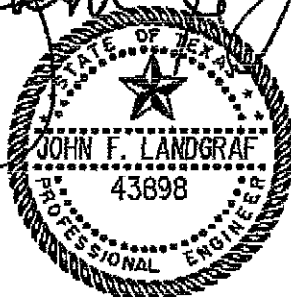


Figure 2. - Typical section for Reinforced Concrete Foundation.

MINIMUM 3,000 PSI CONCRETE.
COMPACT SUBGRADE PRIOR TO CONCRETE POUR.



The seal appearing on this document was authorized by John F. Landgraf Texas P.E. no. 43898 on 15 Aug 2010.
Alteration of this sealed document without proper ratification to the responsible engineer is an offense under the Texas Engineering Practice Act.